



NEWSLINK

The Quarterly Newsletter of South Port Day Links Inc.

October 2011

South Port Day Links Inc.

Annual General Meeting

Notice of Meeting

**Tuesday 15 November, 2011
1.30pm – 3.30pm**

South Melbourne Community Centre
Corner Park St and Ferrars Place, South Melbourne
(Melways Ref: 2K B4 or 57, F2)

All welcome: afternoon tea will be served after the meeting.

SPDL will provide transport: please book on 9646 6362

Please note: no regular transport services will be operating after 12 noon on this day.

Melbourne Cup Sweeps

\$1 & \$2

Call the SPDL office on
9646 6362 to enter



Bunnings B B Q Fundraiser

Saturday October
22

Volunteers needed
or come and buy a
sausage and help
SPDL

In this Newsletter...

From the Chairperson p. 2

Volunteer News p. 3-4

Featured Sponsors/News
p. 5

Volunteer Profile/SPDL
Donation Policy p. 6

Gardening Get-Togethers

Monthly on the third Thursday

1.30pm-3pm
Liardet Centre
Afternoon tea provided
Transport available

RSVP essential: 9646 6362

Our group is growing and we've had a couple of nice outings recently: to the Park Towers Community Garden. Once the weather is on the improve we'll be having some more – watch this space!



From the Chairperson

It's AGM time, and some of you may be thinking of nominating for the Committee of Management. It's a great opportunity to contribute to SPDL.

Members of the Committee of Management do more than just review policy and attend AGMs! When we aren't planning or governing we have many opportunities to have fun on behalf of SPDL. One recent event was a dinner to celebrate the ongoing philanthropy of Brian Sutton.

On Thursday August 8 SPDL supporters and volunteers had dinner in Port Melbourne to witness the handing over of a cheque to fund the purchase of the next DayLinks car. Brian Sutton is a long time Volunteer on Reception at our office and has been a member of the Committee of Management. The Brian J Sutton Foundation has funded several SPDL cars. This dinner was an opportunity to say thank you in a small way.



Brian Sutton, supporter Leslie and Chairperson Geoff at the thank-you function organised by the Committee of Management

Our regular Bunnings BBQ is a great example of the SPDL team harnessing the support of local businesses, such as



Left: CoM member Fran cooks up a storm of sausages

Right: Team members Kathy & Gunther making it all happen with the bread and bits



Brewsters, to raise money while having fun. It also increases our visibility in the broader community, something I feel that we need to expand.

The AGM is a great day for us. It is a chance to get together with old friends. We unveil our plans while boasting about our successes. The AGM enables SPDL to commemorate the dedication of past members and acknowledge our current band of achievers. Our community leaders will be there in recognition of the vital role that DayLinks performs in the City of Port Phillip. I urge you to find the time to join us. The greater the number of clients, volunteers and friends, the greater will be the opportunity for a successful day.

Geoff Ellis, SPDL Chairperson

South Port Day Links Inc acknowledges the funding it receives from the Australian & Victorian Governments under the HACC program, the City of Port Phillip and our other generous sponsors and donors – see them on our website at www.spdl.org.au

Volunteers at SPDL

Spring is in full swing and we have been having a very busy time at DayLinks. Volunteers have been assisting in many ways to help our local residents stay linked to their community. This assistance may be driving someone to the local nursing home several times a week to visit a friend or driving someone and their pet to the vet for a regular visit. Several volunteers have assisted us for a short time with driving, but now have full time work and are looking at assisting us in other ways, such as PetLinks or GardenMates. We really appreciate these volunteers continuing commitment to DayLinks.

A very big welcome to our new volunteers, Sally Behrendt, Ross Garrett and Graham Linley (DayLinks), Susan Pitman (GardenMates), Kerry Palmer-McKaye and Catherine Swinbank (InfoLink), Joanne Lye (Committee) and Ian Bloor has moved from community transport to our Committee.

Driver training



In August we were very happy to host some volunteer driver training with Excel Driving School.

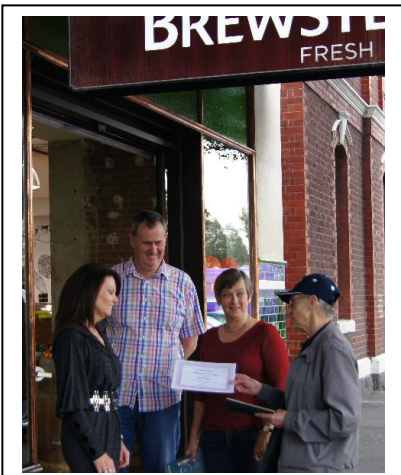
Excel have been assessing our new volunteer drivers for some time now and we are very grateful to Michael Selby (CEO) from Excel for taking the time out of his busy schedule to assist our volunteers with their ongoing driver education.

We had very positive feedback to the session on Low Risk Driving. Thank you Michael!

Volunteer opportunities

We currently have volunteer opportunities for community transport drivers (commitment one half day per week, cars and mini buses provided), GardenMate volunteers and members of our Committee of Management. If you or a friend would like to discuss these opportunities, give Mary or Megan a call at our office on 9646 6362. You can also learn more about South Port Day Links Inc. at www.spdl.org.au

More from our most recent Bunnings BBQ...



PetLinks

Companion animals have become very important in the lives of many Australians. The care of companion animals has increased dramatically over the past few years and the number of dumped animals has declined. Many more people who can no longer care for their animal are now taking them to animal shelters and not dumping them, which has occurred in the past.

How PetLinks can assist you

Dog Walking – Is your favourite friend getting enough exercise these days? Maybe you can take him/her to the end of the street and back, but no further. Is your dog putting on a little weight or starting to look like arthritis is approaching? We currently have several PetLinks volunteers ready to assist you! All our volunteers at South Port Day Links Inc. are screened and have undergone police and reference checks before commencing with us. Our PetLinks volunteers love animals and are ready now to assist you with the care of your pet. So give us a call on 9646 6362 to have a chat about PetLinks.



Ray, Don and Abby



Tina and Scruffy

New Partnership – PetLinks and Dogs Day Afternoon

We are very excited to announce a new partnership with local business Dogs Day Afternoon at 59 Dundas Place Albert Park. Darren Favretto and his team have very generously offered to give our PetLinks clients a free grooming session for their dogs. It is early days, but we have some beautifully pampered pets and very happy owners so far! We thank Darren and his team for their generosity and their willingness to give back to their local community, it is greatly appreciated.

Other support for PetLinks

We also have ongoing support from Yap Wear in South Melbourne. Jenny from Yap Wear has very generously given dog coats to PetLinks clients who are unable to afford a new coat for their precious pooch.

We would also like to acknowledge the wonderful ongoing support of our local vets, Port Phillip Animal Hospital, Albert Park and Elwood Veterinary Clinics and Port Melbourne Veterinary Clinic.



dogs
day
afternoon

Featured Sponsors & Donors



BREWSTERS
foods



Brian
J
Sutton
Foundation

Responsible pet ownership

1. Feed an adequate balanced diet.
 2. Supply clean cool water at all times.
 3. Provide a cosy dry sleeping area.
 4. Provide your dog with regular exercise and allow the pet regular family contact.
 5. Get regular vaccinations for your cat or dog.
 6. Register your pet with the local Council.
 7. Confine your dog to the property at all times, especially at night. Cats should be kept inside the house or garage overnight.
 8. Train your dog so that it is not a nuisance to neighbours e.g. barking or being aggressive to other animals.
 9. Desex dogs or cats that are not going to be involved in breeding.
 10. Ensure your companion animal is adequately cared for during holidays.
- (Information from *Animals Australia* www.animalsaustralia.org).

Gardening Get-together

Some of you may have heard of our gardening get – together that occurs once a month. On the third Thursday of the month from 1.30 pm to 3.00 pm, a small but enthusiastic group of our clients get together to discuss all things gardening! This gathering is usually held at the Liardet Centre in Port Melbourne and transport can be arranged through our DayLinks program to bring you along. We also occasionally go on an excursion to look at interesting gardens (not too far away).

Recently we went on a short trip to the community garden at Park Towers in South Melbourne. This is a fascinating and beautiful community garden, that is really developing and everyone at Park Towers should be very proud of it!



Members of our Gardening Get-Together group with participants of Park Towers Community Garden

Volunteer Profile - Kerry Plamer-McKaye

Interests/Passions: I love to travel and see new places and meet new people. From the age of 16 I have worked in the travel industry and this has given me great opportunity to visit many countries. I walk a great deal and very much enjoy the outdoors. But when inside I like nothing better than a good movie, I will give almost any film a go.

How long have you been volunteering at South Port Day Links Inc.? I only started volunteering with SPDL on the 6th of September; I sat with another volunteer Catherine who showed me how to work the reception.

How did you find out about SPDL? In truth it was a fortunate accident. I had been asking around for voluntary work in the area, but not being an Australian citizen some groups were unable to accommodate me. Until one day I came to the community centre and someone suggested I speak to Mary from SPDL.



What keeps you volunteering with SPDL? No two days are the same that makes the experience more interesting. The staff and other volunteers are fun to work with, no question is too silly and they are always willing to help. I like speaking to the people who use the service, although it's not always possible to chat.

SPDL Inc Policies & Procedures

Donation Policy

PRINCIPLE

SPDL Inc. provides a service that is available to all HACC clients and other eligible clients regardless of financial status.

POLICY

SPDL Inc. will not refuse services to people who are unable to afford to make a contribution.

PROCEDURE

SPDL Inc. services provided to clients will not incur a charge or fee, however, a donation will be requested for transport. These donations are encouraged but not compulsory and the funds are to be used to assist with vehicle expenses. All donations to SPDL Inc of \$2 or more are tax deductible, and a receipt will be issued on request.